

SINGLE PHASE INDUCTION MOTORS

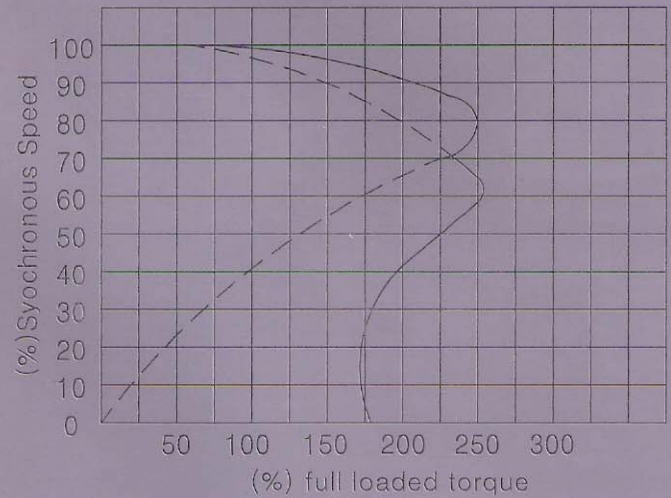
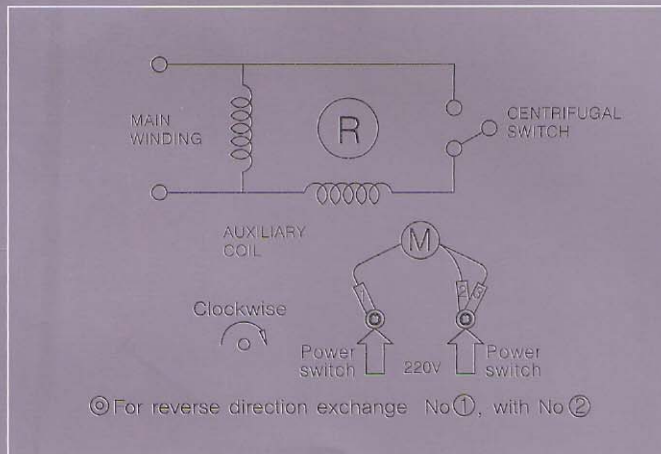


SPECIFICATION

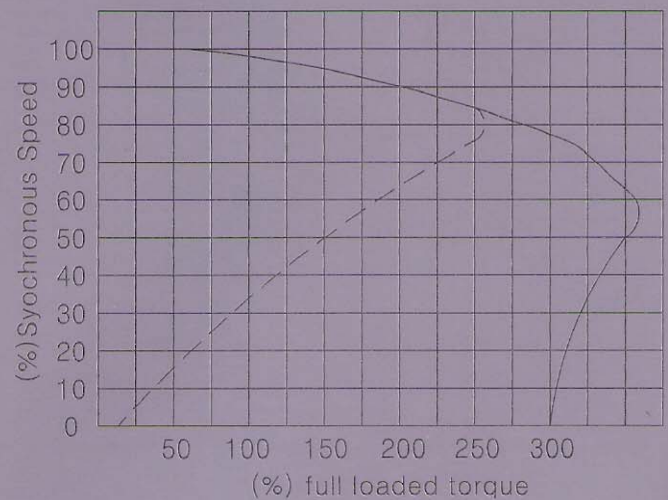
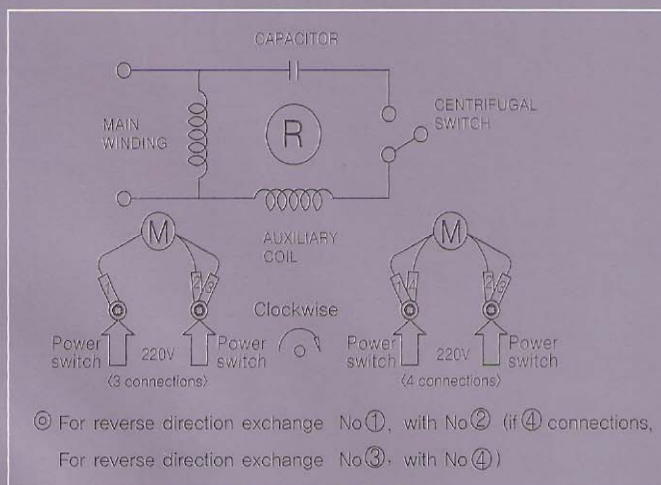
TYPE	SSH
PHASE	1 ϕ
OUT PUT	0.2KW~3.7KW
VOLTAGE	220V
CYCLE	50HZ, 60HZ
POLES	2P, 4P, 6P
INS. CLASS	B, [F]
START TYPE	SPLIT PHASE, START MOTOR
	CAPACITOR START MOTOR
	CAPACITOR RUN MOTOR

[F] class motor is order made.

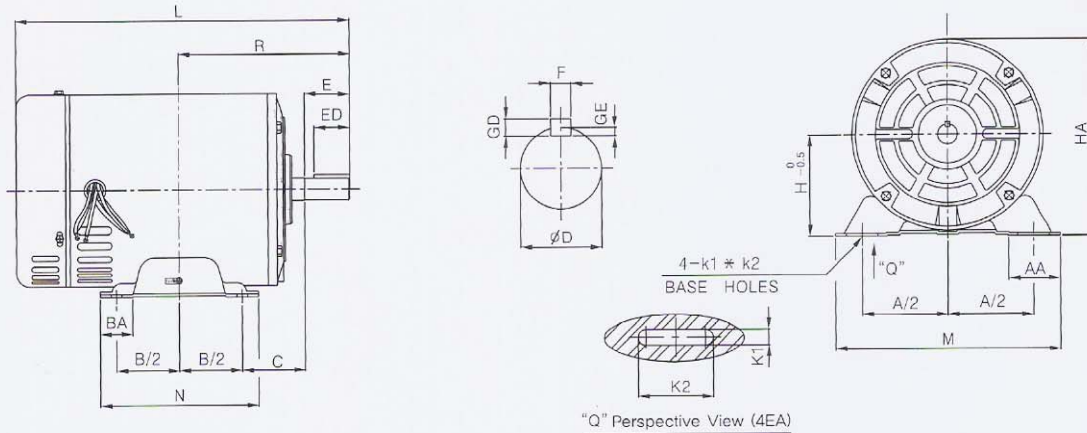
SPLIT PHASE START MOTOR



CAPACITOR START MOTOR



SINGLE PHASE CAPACITOR START INDUCTION MOTORS



OUTLINE DIMENSIONS

(UNIT: mm)

NO	FRAME NO.	OUT PUT(KW)			DRIVE END(P.L)					H	A/2	B/2	C	K1	K2	AA	BA	M	N	L	R	HA	BEARING		W.T (kg)	
		2P	4P	6P	φD	F	GD	GE	ED														E	PL		OPL
1	71	0.2	0.2	-	14h6	-	-	1	27	30	71	56	45	45	7	20	23	22	142	110	251	120	137	6202zz	6202zz	9
		0.25	0.25	-		5	5	3	16												266					10.5
2	80	-	0.4	-	16h6	5	5	3	28	40	80	62.5	50	50	10	30	45	40	168	124	300	140	152.5	6204zz	6203zz	11
3	90S	0.4	-	-	19h6	5	5	3	28	40	90	70	50	56	10	36	50	48	190	130	255	146	172.5	6204zz	6203zz	12
		0.75	0.4	0.2									275								14.8					
4	90L	-	0.55	-	19h6	6	6	3.5	28	40	90	70	62.5	56	10	36	50	48	190	155	295	158.5	172.5	6205zz	6203zz	17
		1.1	0.75	0.4									305								19					
5	112S	1.5	1.1	-	22h6	7	7	4	28	50	112	95	70	70	12	36	62	58	250	176	350	190	218	6205zz	6205zz	26
		2.2	1.5	0.85	24h6																370					32
6	112M	-	1.9	-	28h6	7	7	4	40	60	112	95	70	70	12	36	62	58	250	176	385	200	218	6206zz	6205zz	33.4
		3.7	2.2	1.5																	390					35.3
7	112L	-	3.7	3.7								75	92	φ12		38	36	220	190	399	227	232.5			52	

- Note) 1. Dimensions and specifications can be changed for improvement of the products.
 2. F class motor is order made.
 3. 2P and 6P made by only customer order and frame number made different by user's requirement.

KSC4204

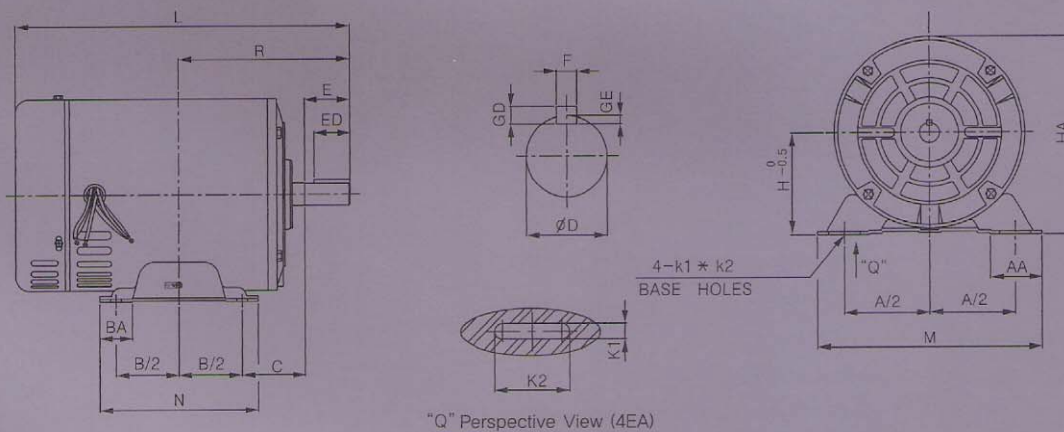
OUT PUT (KW)	POLE (P)	SYN SPEED (R.P.M)	WITH FULL LOAD			STARTING CURRENT (A)	REFERENCE		
			EFFICIENCY (%)	POWER FACTOR (%)	FULL LOAD CURRENT (A)		NO LOAD CURRENT (A)	STARTING TORQUE (%)	MAXIMUM TORQUE (%)
0.2	4	1800	49 Over	54 Over	3.1	15	2.2	125 Over	175 ~ 300
0.4	4	1800	57 "	60 "	4.3	21	3.0	200 "	175 ~ 300
0.75	4	1800	63 "	65 "	7.4	27.5	5.0	200 "	175 ~ 300
1.1	4	1800	67 "	65 "	11	60	8.0	200 "	175 ~ 300
1.5	4	1800	70 "	65 "	14	90	10.0	200 "	175 ~ 300
2.2	4	1800	80 "	72 "	17	110	11.0	200 "	175 ~ 300
3.7	4	1800	80 "	74 "	27	145	16.0	200 "	175 ~ 300

HIGH EFFICIENCY SINGLE PHASE INDUCTION MOTORS

1. Features of EUL JI high efficiency single phase induction motors

- A. The first developed product in Korea
- B. User convenience
 - High efficiency, power factor, and low current
- C. Saving energy with high efficiency and power
- D. Possibility of using small capacitance transformer
 - Driven by low electric current, and low voltage
- E. Easy to set up
 - Compactness – easy to install in small place
- F. Reliability
 - New design for dustproof in torque switch part
 - Anti-overload design

2. OUTLINE DIMENSIONS



NO	FRAME NO.	OUT PUT(KW)		DRIVE END(P.L)							H	A/2	B/2	C	K1	K2	AA	BA	M	N	L	R	HA	BEARING		W.T (kg)
		SIZE	4p	φD	F	GD	GE	ED	E	PL														OPL		
1	71		0.2	14h6	-	-	1	27	30	71	56	45	45	7	20	23	22	142	110	250	120	137	6202zz	6202zz	9	
2	80		0.4	16h6	5	5	3			80	62.5	50	50		30	45	40	168	124	270	140	152.5	6204zz	6203zz	11	
3	90S		0.4	19h6				28	40										255				6204zz	6203zz	12	
4	90L		0.75	19h6	6	6	3.5			90	70	62.5	56	10		50	48	190	130	270	146	172.5	6204zz	6203zz	16	
5	90L	small	1.1	22h6															155	315			6205zz	6203zz	19	
6	112S		1.1	22h6				28	50	112	95	70	70	12	36	62	58	250	176	350	190	218	6205zz	6205zz	26	
7	90L	small	1.5	24h6	7	7	4			90	70	62.5	56	10			50	48	190	155	330	146	172.5	6205zz	6203zz	21
8	112M		1.5	24h6								70	70	12			62	58	250	176	370	190	218	6206zz	6205zz	32
			2.2	28h6				40	60	112	95	75	92	φ12				38	36	220	190	390	200			35.3
9	112L		3.7									75	92	φ12		38	36	220	190	399	227	232.5			52	

3. Characteristics of high efficiency single phase induction motors

OUT PUT (KW)	POLE (P)	SPEED (R.P.M)	WITH FULL LOAD			REFERENCE		
			EFFICIENCY (%)	POWER FACTOR (%)	FULL LOAD CURRENT (A)	STARTING CURRENT (A)	STARTING TORQUE (%)	MAXIMUM TORQUE (%)
0.2	4	1720	63 Over	80 Over	1.6	15	200 Over	200 Over
0.4	4	1730	69 "	80 "	3.0	21	200 "	200 "
0.75	4	1750	76 "	80 "	4.2	27	200 "	200 "
1.1	4	1750	78 "	85 "	6.2~8.2	50	200 "	200 "
1.5	4	1750	79 "	85 "	8.5~10.2	65	200 "	200 "
2.2	4	1760	80 "	85 "	12.5	85	200 "	200 "
3.7								

*Dimensions and specifications can be changed for improvement of the products.

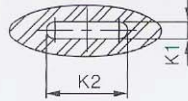
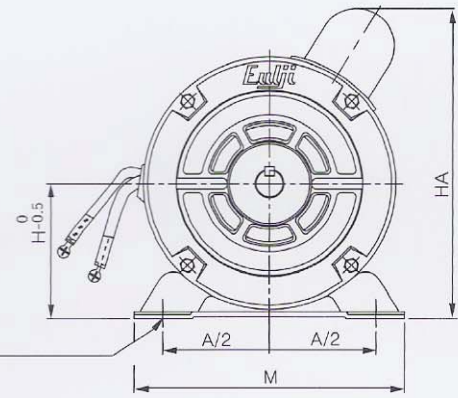
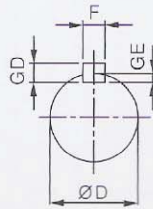
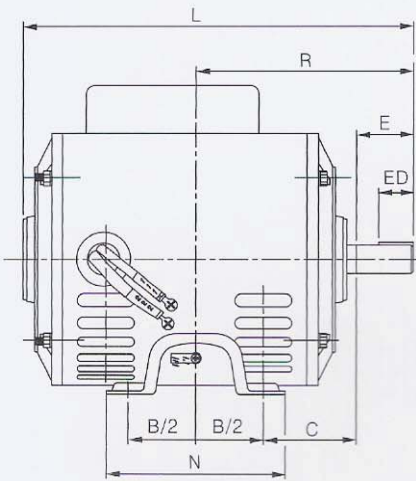
SINGLE PHASE CAPACITOR RUN INDUCTION MOTORS



SPECIFICATION

TYPE	SSH
PHASE	1φ
OUT PUT	0,2KW~2,2KW
VOLTAGE	220V
CYCLE	50HZ, 60HZ
POLES	2P, 4P, 6P
INS. CLASS	B, [F]

[F] class motor is order made.



"Q" Perspective View (4EA)

OUTLINE DIMENSIONS

(UNIT: mm)

NO	FRAME NO	OUT PUT(Kw)		DRIVE END(P.L)					H	A/2	B/2	C	K1	K2	AA	BA	M	N	L	R	HA	BEARING		W.T (kg)	
		4P	6P	ØD	F	GD	GE	E														ED	PL		OPL
1	71	0.3	-	14 _{h6}	5	5	3	30	25	71	56	45	45	7	20	30	22	142	110	266	120	137	6202zz	6202zz	10.5
2	90S	0.4	0.2	19 _{h6}	5	5	3		22	90	70	50			50	27	190	130	275	146	172.5	6204zz	6203zz	14.8	
3	90L	0.75	0.4	19 _{h6}	6	6	3.5	40	28			62.5	10	36	50	27						155	305	158.5	6205zz
4	112S	1.1	-	22 _{h6}						112	95	70	70	12	36	62	58	250	176	350	190	218	6205zz	6205zz	26
		1.5	0.75	24 _{h6}	7	7	4	50	28											370			32		
5	112M	2.2	1.5	28 _{h6}					60	40									390	200		6206zz	6205zz	35.3	

- Note) 1. Dimensions and specifications can be changed for improvement of the products.
 2. F class motor is order made.
 3. For. fanheater, Drying, etc.